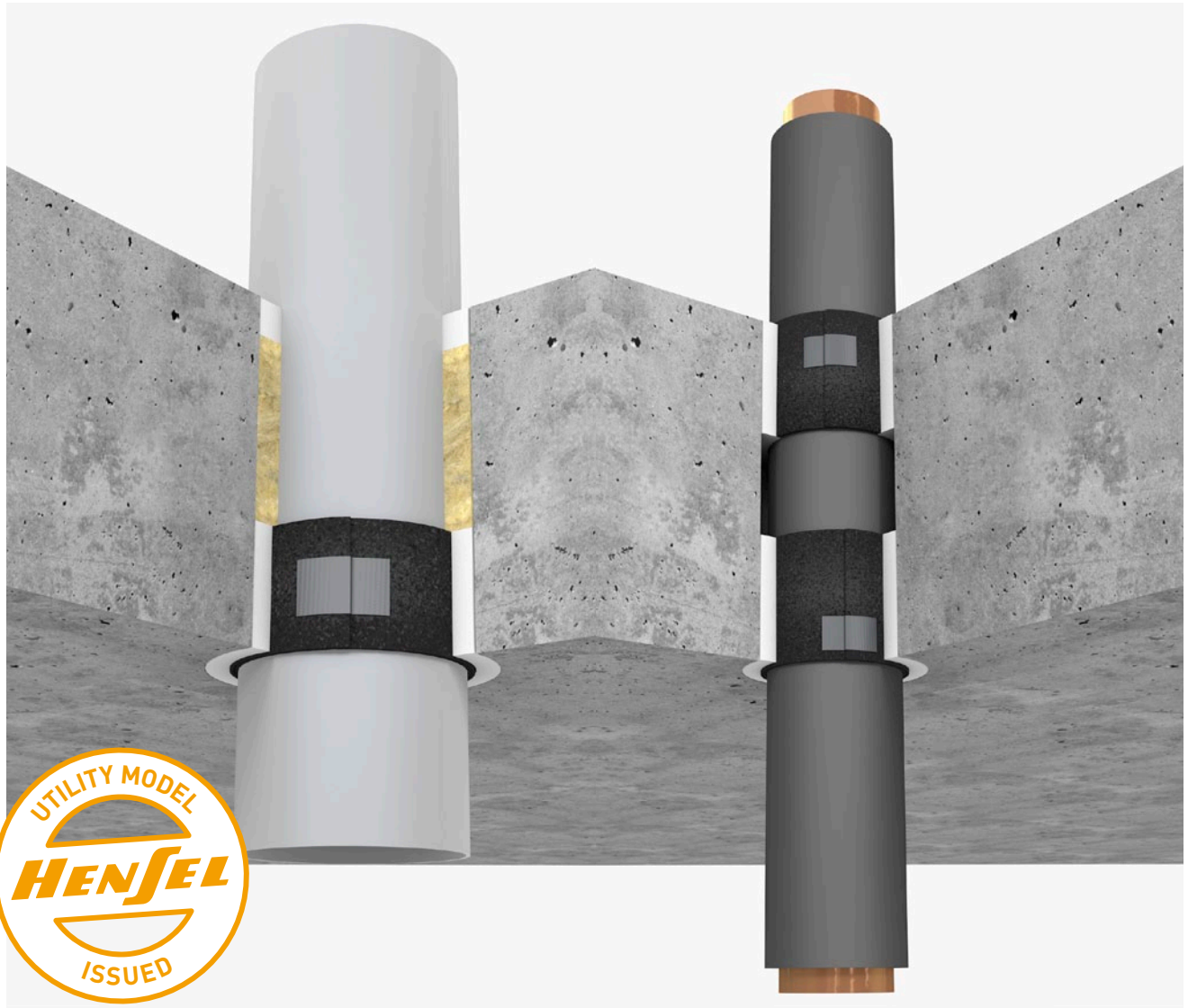


# HENSOTHERM®

## HENSOTHERM® 7 KS Gewebe 50

Endless pipe wrap for combustibile and incombustible pipes

### Fire protection solution for single pipe penetration



Assembly instructions

#### **HENSOTHERM® 7 KS Gewebe 50 for use in flexible walls, solid walls, and solid floors**

- **HENSOTHERM® 7 KS Gewebe 50** intumescent endless pipe wrap for the penetration sealing of
  - combustibile pipes
  - incombustible pipes with synthetic rubber insulation
- Combustibile pipes tested in the U/U end configuration
- Tested up to fire resistance class EI 240
- Tested in accordance to EN 1366-3
- **ETA 18/0417**
- Utility model issued



# TECHNICAL INFORMATION

## Approval/classification

- Tested in accordance to EN 1366-3
- ETA 18/0417
- Utility model issued in Germany, Austria, Danmark; applied for further countries

## Field of application

- Penetration sealing of single pipe penetration for combustible and incombustible pipes
- For use in flexible walls, solid walls, and solid floors indoors
- Fire resistance class up to EI 240
- Wall thickness from 100 mm
- Floor thickness from 150 mm

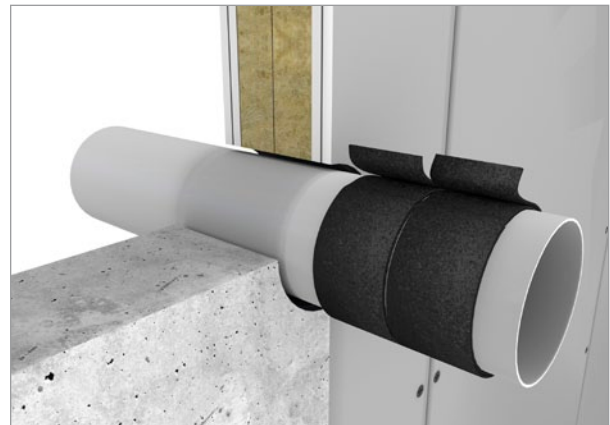
## Wall installation | Incombustible pipes / combustible pipes

The appropriate number of **HENSOTHERM® 7 KS Gewebe 50** layers are wrapped around the incombustible / combustible pipe or its insulation, secured with duct tape, and aligned flush to the component's surface. HENSOTHERM® 7 KS Gewebe 50 is applied **to both sides**.

**Incombustible pipes**



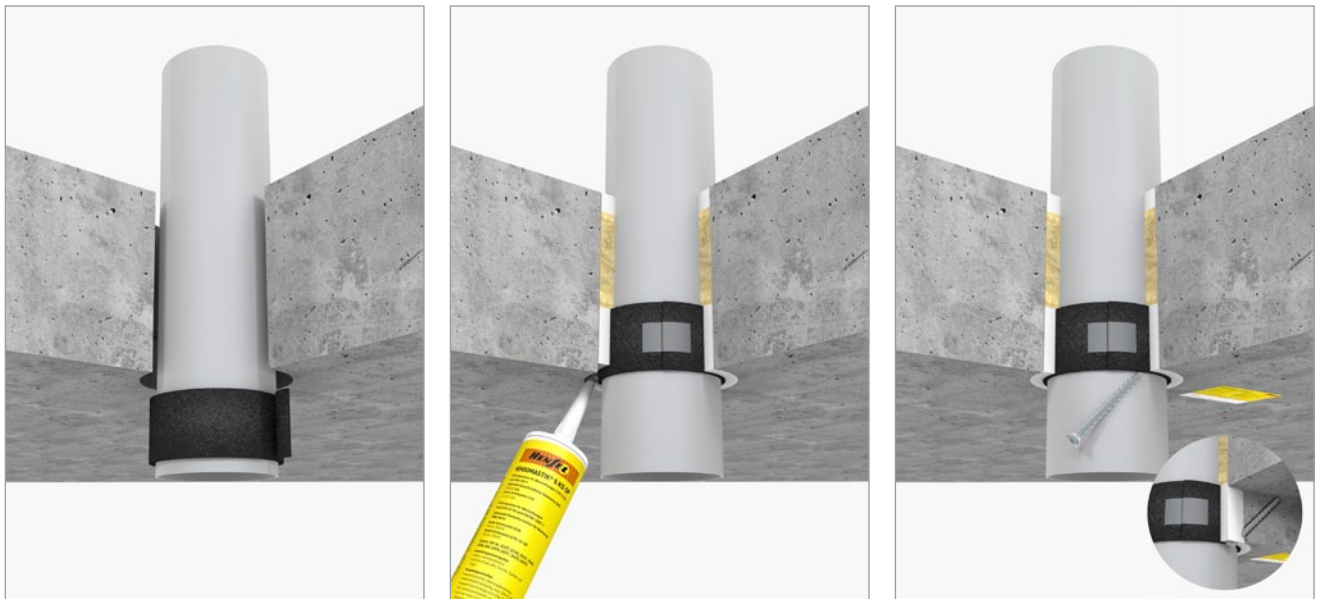
**Combustible pipes**



The annular gap around the wall penetration is sealed on both sides with HENSOMASTIK® 5 KS SP, plaster, or mortar (A1) in a depth of at least 5 cm.

### Floor installation | Combustible pipes

The appropriate number of **HENSOTHERM® 7 KS Gewebe 50** layers are wrapped around the combustible pipe, secured with duct tape, and aligned flush to the component's surface. **HENSOTHERM® 7 KS Gewebe 50** is applied **on the bottom floor side** only.

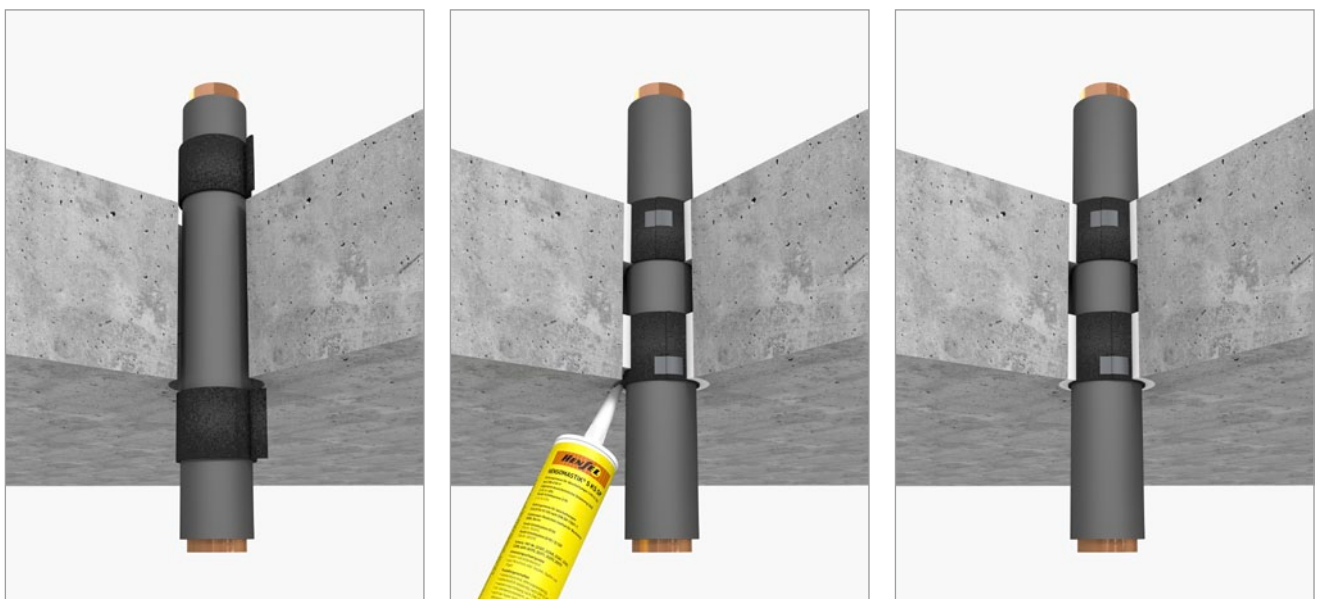


The annular gap is stuffed with mineral wool and sealed on the top side in a depth of at least 10mm and on the bottom floor side in a depth of at least 50 mm with **HENSOMASTIK® 5 KS SP**. Alternatively, the annular gap can be filled with plaster or mortar (A1) through the whole thickness of the floor.

**Note:** For combustible pipes in floors with a diameter of  $\geq 110$  mm concrete screws, for additional fastening of the **HENSOTHERM® 7 KS Gewebe** as pipe wrap, are needed. The concrete screws, 3 pieces per installation, penetrate the pipe wrap from the outer side of the pipe and are screwed in an angle of approx 45° in the ceiling.

### Floor installation | Incombustible pipes

The appropriate number of **HENSOTHERM® 7 KS Gewebe 50** layers are wrapped around the incombustible pipe/ its insulation, secured with duct tape, and aligned flush to the component's surface. **HENSOTHERM® 7 KS Gewebe 50** is applied **to the top and bottom sides of the floor**.



The annular gap around incombustible pipes is sealed with **HENSOMASTIK® 5 KS SP** at least 5cm thick on the top and bottom floor sides. Alternatively, the annular gap can be filled with plaster or mortar (A1) through the whole thickness of the floor.

### Packaging units

- **HENSOTHERM® 7 KS Gewebe 50:** Fabric on roll, 50mm wide, 2mm thick, and 15 m long
- **HENSOMASTIK® 5 KS SP:** 310 ml cartridge, 6 kg or 12.5 kg packaged unit

## Combustible pipes

Ventilated sewer pipes of **PP, PE-HD** | Annular gap 0–20 mm

**Tested manufacturers: Geberit (Silent PP, dB20, PE-HD), Polokal (NG, 3S), Raupiano Plus, Ostendorf PP-HT (excluding PE 80/PE 100)**

Pipe diameter (mm)	Wall thickness (mm)	HENSOTHERM® 7 KS Gewebe 50 layers	Material requirements for walls (length in mm)	Material requirements for floors (length in mm)
50	*	2	2 x 360	1 x 360
56	*	2	2 x 400	1 x 400
75	*	3	2 x 790	1 x 790
90	*	4	2 x 1,250	1 x 1,250
110	*	4	2 x 1,500	1 x 1,500
125	*	5	2 x 2,160	1 x 2,160

\* For all wall thicknesses

Pipes of **PVC-U** | Annular gap 0–20 mm

Pipe diameter (mm)	Wall thickness (mm)	HENSOTHERM® 7 KS Gewebe 50 layers	Material requirements for walls (length in mm)	Material requirements for floors (length in mm)
50	1.8–5.6	2	2 x 360	1 x 360
75	1.9–5.6	3	2 x 790	1 x 790
90	2.2–8.1	4	2 x 1,250	1 x 1,250
110	2.2–8.1	4	2 x 1,500	1 x 1,500
125	2.5–9.3	5	2 x 2,160	1 x 2,160

## Composite aluminium pipes

**Tested manufacturers: Geberit Mepla, Kekelit Kelox, Uponor MLC**

Pipe diameter (mm)	Wall thickness (mm)	HENSOTHERM® 7 KS Gewebe 50 layers	Synthetic rubber insulation (thickness in mm)	Insulation configuration/length
14–40	—	1	11.5–38.5	CS/full insulation
> 40–63	—	2		

## Incombustible pipes

Pipes of copper/ steel/ stainless steel | Annular gap 0–20 mm

Pipe diameter (mm)	Wall thickness (mm)	HENSOTHERM® 7 KS Gewebe 50 layers	Synthetic rubber insulation (thickness in mm)	Insulation configuration/length
≤ 15	1.0–14.2	1	11.5–38.5	CS/full insulation
15 ≤ 54	1.0–14.2	2		
Steel 54 ≤ 88.9	1.0–14.2	2		

Our technical advisers will be pleased to assist you with your enquiries!

Complete product portfolios and further details can be downloaded from [www.rudolf-hensel.com](http://www.rudolf-hensel.com)

The information provided herein reflects the current state of our technical testing and experience with the use of this product. However, the buyer/user is hereby not relieved of their duty, at their own responsibility, to properly examine our materials for their suitability for the intended use based on the respective site conditions. Legal claims for damages arising from the use of this product for purposes other than, or in a manner that differs from, the description contained herein without our prior written approval are precluded and may not be asserted against us. In light of the circumstance that we have no influence over site conditions and various factors that could influence the performance and use of our product, a guarantee of results or liability, regardless of legal grounds, cannot be derived from this information or from verbal consultation provided by one of our employees unless we may be accused of intent or gross negligence. Our General Terms and Conditions apply for all other purposes ([www.rudolf-hensel.de/gtc](http://www.rudolf-hensel.de/gtc)). The most recent version of our technical data sheet is valid and may be requested from the Rudolf Hensel GmbH or downloaded at [www.rudolf-hensel.de](http://www.rudolf-hensel.de).

# RUDOLF HENSEL GMBH

Lack- und Farbenfabrik

Lauenburger Landstraße 11  
21039 Börnsen | Germany

Tel. +49 40 72 10 62-10  
Fax +49 40 72 10 62-52

Email: [kontakt@rudolf-hensel.de](mailto:kontakt@rudolf-hensel.de)  
Internet: [www.rudolf-hensel.com](http://www.rudolf-hensel.com)

Extensions:  
Orders: -40

Technical advice/ sales  
D/A/CH: -44, international: -48

